

MAYFAIR DAY NURSERY

PROSPECTUS



*Mayfair  
Day Nursery  
Prospectus*

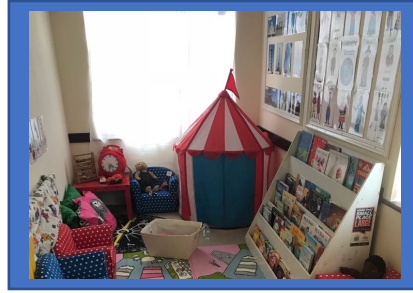
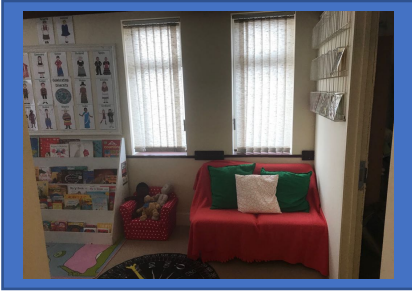


## Registration Check List

- ❖ Registration form
- ❖ Contract
- ❖ Consent forms
- ❖ Child's proof of ID
- ❖ Parents proof of ID
- ❖ Parents proof of address
- ❖ Permission to collect forms

# MAYFAIR DAY NURSERY

## PROSPECTUS



## Welcome...

Welcome to Mayfair Day Nursery, we care for children aged from 3 months to 5 years. We also provide an after school / holiday club for children aged 5 years to 8 years. Our opening times are 7.00am – 7.00pm.

Our primary aim is to provide a safe, nurturing atmosphere as we strongly believe that children thrive independently whilst learning and exploring. Our highly qualified and experienced team plan a wide variety of activities around the Early Years Foundation Stage.

Our beautiful and colourful playrooms and outdoor area are equipped with imaginative resources and toys. Making Mayfair Day Nursery unforgettable for any child.

If you haven't already, book a visit today to find out about the unique experiences Mayfair Day Nursery can offer your child to help them learn, flourish, make new friends and develop.



## *Learning and development - building confidence for the challenges ahead...*

At Mayfair Day Nursery we are committed to building the best possible foundation for your child's learning Journey. A confident child is a happy, successful child and we believe providing a stable environment is paramount to enable your child to get a good head start and prepare them for 'Big School'

Every child at Mayfair Day Nursery has a Key Person – The Key Person will build a genuine bond with your child to help them feel safe and secure. Your child's Key Person will observe your child using the EYFS (Early Years Foundation Stage) and plan appropriate activities to support their learning and development.

The EYFS is made up of of seven areas of learning. Prime Areas – Personal Social and Emotional Development, Communication and Language and Physical Development. Specific Areas – Mathematics, Literacy, Understanding the World and Expressive Arts and Design.

With the high calibre of care and teaching we provide, your child will be on their way to exceeding their 'Next Steps'.

MAYFAIR DAY NURSERY  
PROSPECTUS

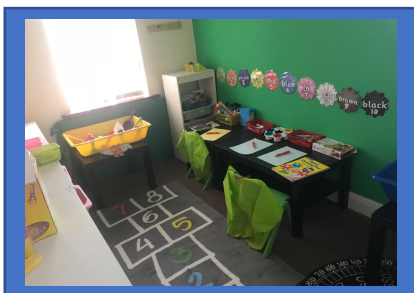


## Partnership with parents...

Partnership with parents is fundamental in supporting children and building a solid foundation for their learning and development, therefore, working with parents is paramount in how we care for children.

We involve parents in everything we do – events - such as Sports Day, Graduation Day, Cultural Day and Christmas Party. We also go on outings to the Aquarium, Farm and Zoo. We keep parents up to date with all events at Nursery.

Here at Mayfair Day Nursery we have an 'Open Door Policy' – Which means you can reach us at any time, if you have any questions please feel free to speak to us at any time.



MAYFAIR DAY NURSERY, 8 NORMANHURST AVENUE, BEXLEYHEATH, KENT, DA7 4TT.  
07564 528 622

# MAYFAIR DAY NURSERY

## PROSPECTUS



## *Healthy meals...*

Mayfair Day Nursery provides a healthy well-balanced menu which is prepared daily by our qualified chef.

Breakfast is served at 8.00am, snack at 10.00am, lunch at 12.00pm and tea at 4.00pm. Fresh water and milk is available throughout the day.

Special dietary requirements due to allergies, religious beliefs and preference will be catered for.

# Preparing your child for their first day at nursery...

Preparing for the big day! Your child's first day is almost here. You are both bound to be really excited about this new adventure. – but feeling a bit nervous and anxious is very normal too.

During your registration process you will be asked to complete an "All about me!". This will help us to learn about your child before they start.

Your child is bound to be wondering what their first day at nursery will be like when they arrive and what sort of things happen during the day. We will arrange settling in sessions with you – We will invite you to stay with your child during their first settling in session so they can familiarise themselves with their key person and room. As your child becomes more confident you will be able to leave your child for longer periods of time.

At Mayfair Day Nursery we are happy for you and your child to take as long as you like to settle in. All settling in sessions are free of charge.

Please provide your child with the following... Nappies, baby wipes, formula / milk, comforter and full change of clothes. Please provide appropriate spare clothes for the weather. (If applicable)



# MAYFAIR DAY NURSERY

## PROSPECTUS



## Frequently asked questions...

### **What are the Nursery opening times?**

We are open from 7.00am-7.00pm Monday to Friday. The nursery is open all year round with the exception of bank holidays.

### **What are the Nursery session times?**

Full day sessions are from 7.00am – 7.00pm. We offer AM and PM sessions - AM sessions are from 7.30am-12.30pm or 8.00am-1.00pm and PM sessions are from 1.00pm-6.00pm or 1.30pm-6.30pm.

### **What other services do you provide?**

We also provide Before and After School Club and Holiday Club for children ages 5 years to 8 years.

### **How often do the children go outside?**

The Early Years Foundation Stage believes that whatever can be done inside can also be done outside: therefore, we plan daily outdoor activities for the children. (Weather permitting)

### **What should I do if I am running late?**

If you are running late please contact the nursery immediately on 07564 528 622.



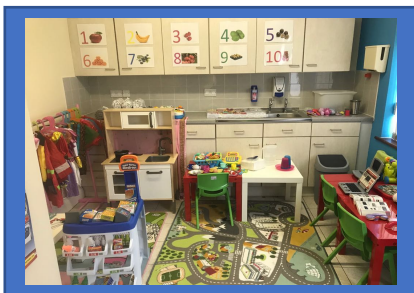
# *Making the right choice for your child...*

We all know that no two children are alike. We also know that no two nurseries are alike, which is why at Mayfair Day Nursery we are 'always striving' to achieve the best of both worlds. We provide an inspirational environment to motivate each child to 'give it their all' and be the best they can be.

Mayfair Day Nursery is headed by experienced Manager and Deputy Managers who are experts in the Early Years sector. Additionally all senior staff members are available daily to speak to parents / carers.

We have qualified and competent staff in all of our rooms who hold a recognised qualification in childcare and have Enhanced DBS certificates. All staff hold current paediatric First Aid Training. We always ensure that Staff to child ratios are adequately met throughout the nursery.

Your child is very special – come and visit Mayfair Day Nursery to see for yourself how very special we are, too.



MAYFAIR DAY NURSERY  
PROSPECTUS



*Where opportunities make all the  
difference*

**T: 07564 528 622**

**E: [mayfairdaynursery@gmail.com](mailto:mayfairdaynursery@gmail.com)**

**W: [www.mayfairdaynursery.com](http://www.mayfairdaynursery.com)**